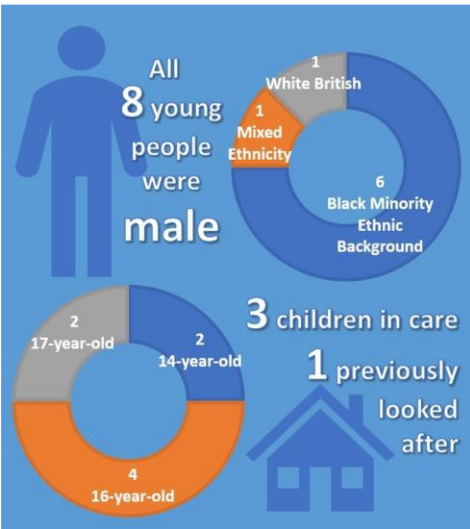


*Bristol, North Somerset and South Gloucestershire Cross-Border Peer-on-Peer Abuse and Child Criminal Exploitation CSPR October 2021*



**What do we know about the young people?**

- For most of these young people, home was not a protective environment
- Domestic abuse was identified in four of the eight cases
- Five of the young people had been subject to physical abuse from father or step-father
- Half of the families were involved in criminality, selling drugs and serious violence
- Six of the eight young people were identified as having special educational needs
- Four of the young people were in or had a history of being in care
- Neglect and emotional abuse were cited in two of the cases

The three regional partnerships commissioned Dr Julie Harris for this Thematic Knife Crime Review

7 incidents of peer on peer violence were included. There was one fatality



Professionals from Multiple agencies across the three local authorities took part



Families and young people also contributed their views

Conditional Dynamic factors identified

**What Can we do Differently?**

Consistently identified were the challenges faced by families accessing meaningful long term engagement. Involvement came at a late stage despite clear indicators of background vulnerability.

- Getting involved early with long term relational support from a consistent adult who understands the young person's life helped to mitigate risk for the young people who had access to this.
- Specialist CCE resources and responses.
- Assertive outreach approaches
- Long term work that does not end after 12 weeks

*You have to be on your alert. I lost a friend to stabbing. You have to be forever alert. You have to know who you class as a friend but you trust no one. It can happen anywhere... It's a dice game – unexpected. You have to make sure you are knowledgeable about what you are doing and who you are doing it around*

**Recommendations**

There are 9 recommendations which include:

- Improved therapeutic provision including speech and language, mental health support
- Responses to boys under 10 experiencing physical abuse
- Innovation in supported accommodation for young people at risk of CCE
- Working towards a zero exclusion policy in education settings
- Improved risk assessment tools
- Review of multi-agency case coordination arrangements for adolescents experiencing exploitation
- Identification and response to perpetrators of CCE, County Lines, organised crime
- Escalation to DfE & Home Office the challenge of providing consistent services and long term support
- A regional approach to increasing safety in peer groups

**Evidence of Good Practice**

- One school worked consistently hard to avoid permanent exclusion by providing and funding a range of interventions including: weekly mentoring sessions; additional mentoring for a younger sibling; referral for counselling; extra tutoring and a bespoke education package
- Strong advocacy provided by Early Help, also in exploring and addressing behavioural concerns and providing support with negotiated transfers
- Serious Violence Education Inclusion Managers was particularly effective in advocating for young people to remain in mainstream school
- Trauma-sensitive and developmental approach to the emotional and social needs of young people in outreach work to engage and support children back into mainstream school

*Relationship based practice and a consistent professional network is a protective factor*

*You can read the full Thematic Child Safeguarding Practice Review by clicking here*

